



Obex Drawing Register

Standard Drawings

Reynaers - Projecting window, SFS, Rainscreen cladding



Drawing Register

Standard Drawings

Reynaers – Projecting window, SFS, Rainscreen cladding

Detail Type	Window System	Comments	Drawing number	Link
Sill	Reynaers or similar Aluminium typical pressed sill	Projecting window, SFS, Rainscreen cladding	PROJ-OBEX-XX-112	>
Head inc. trickle vents	Reynaers	Projecting window, SFS, Rainscreen cladding	PROJ-OBEX-XX-111	>
Jamb	Reynaers	Projecting window, SFS, Rainscreen cladding	PROJ-OBEX-XX-110	>

OBEX CORTEX AVCL TAPED AND SEALED TO THE INTERNAL PERIMETER SEALING MEMBRANE OR VICE-VERSA TO SUIT ON SITE SEQUENCING. MIN OVERLAP 20mm** 50mm PREFERRED.
 BUILDING REGULATIONS PART L:2021, L1(a):421 REQUIREMENT. DISTINCT AND SEPARATE INTERNAL PERIMETER AIR SEALING TAPE OBEX CORTEX 0531FR AIR AND VAPOUR TAPE (SELF ADHESIVE).

RECOMMENDED OBEX CORTEX 0230FR CLASS A2 or OBEX CORTEX 0530FR CLASS B AIR AND VAPOUR CONTROL MEMBRANE. APPLIED IN ACCORDANCE WITH OBEX RECOMMENDATIONS WITH CORTEX 0825FR BREATHER AND VCL INSTALLATION KIT.

RECOMMENDED OBEX CORTEX 0270FR CLASS A1 SCORE'N'SNAP CEMENT AGGREGATE SHEATHING OR SIMILAR APPROVED SHEATHING BY OTHERS. ALWAYS OBEX ADHESIVE COMPARABILITY.

NOTE: MIN. BONDED LAP OF ISM ONTO POROUS SURFACE IS 100mm
 ALL LUGS AND SUPPORT MECHANISMS ARE JOB SPECIFIC AND MUST BE FULLY ENGINEERED BY OTHERS TO ENSURE ANY PRODUCT MOVEMENT IS WITHIN SYSTEM AND REGULATION LIMITS.

DOUBLE SKIN OF 12.5mm PLASTERBOARD TO CONCEAL THE INITIAL 20mm CONNECTION OF THE INTERNAL PERIMETER SEALING MEMBRANE (CORTEX 0531FR AIR AND VAPOUR TAPE)

OBEX CORTEX BREATHER MEMBRANE TAPED AND SEALED TO THE WINDOW SYSTEM OR OBEX CORTEX INTERFACE SEALING MEMBRANE WITH SYSTEM APPROVED OBEX CORTEX 0823FR UV FACADE TAPE. MIN OVERLAP 50MM. SEE DRAWING SPECIFIC NOTES FOR OPTIONS

- INTERFACE SEALING MEMBRANE OPTIONS:
1. OBEX CORTEX EPDM MEMBRANE SYSTEM (FOR NON-RELEVANT BUILDINGS ONLY)
 2. OBEX CORTEX 0860 SELF-ADHESIVE EPDM MEMBRANE SYSTEM (FOR NON-RELEVANT BUILDINGS ONLY)
 3. OBEX CORTEX 0500FR CLASS B ISM SYSTEM - B-S1,D0
 4. OBEX CORTEX 0560FR CLASS B SELF-ADHESIVE ISM SYSTEM - B-S3,D0
 5. OBEX CORTEX 0200FR CLASS A2 ISM SYSTEM - A2-S1,D0
- OBEX CORTEX ISM SYSTEM APPLIED TO WINDOW SYSTEM AND SHEATHING BOARD IN ACCORDANCE WITH OBEX RECOMMENDATIONS

20.0 MIN. BONDED LAP

50.0 MIN. BONDED LAP

50.0 MIN. TO 100.0 MAX BONDED LAP

- BREATHER MEMBRANE OPTIONS:
1. CORTEX 0520FR CLASS B, W1 (BLACK)
 2. CORTEX 0521FR CLASS B, W1 SELF ADHESIVE (BLACK)
 3. CORTEX 0223FR UV CLASS A2, W1 (SILVER)
 4. CORTEX 0221FR CLASS A2, W2 (BLACK)
 5. CORTEX 0220FR CLASS A1, W2.
- BREATHER MEMBRANES ARE APPLIED IN ACCORDANCE WITH OBEX RECOMMENDATIONS WITH CORTEX 0825FR BREATHER AND VCL KIT.

FILLER: E.G. LOOSE PACKED MINERAL WOOL

FIRE BARRIER AS PROJECT SPECIFICATION LOCATED IN ACCORDANCE WITH BARRIER SYSTEM AND FIRE OFFICER REQUIREMENTS.

PRIMARY WEATHER SEAL. BY OTHERS. TYPICALLY IMPREGNATED EXPANDING FOAM or PREMIUM SILICONE SEALANT WITH BACKING ROD

10.0±4

GAP BETWEEN WINDOW AND STRUCTURE TO BE SET IN ACCORDANCE WITH ARCHITECTURAL INTENT. WHILE ALSO ENSURING IT IS WITHIN CHOSEN SILICONE SYSTEM or TAPE SYSTEM JOINT PARAMETERS.

DISCLAIMER:

DO NOT SCALE FROM DRAWING. THIS DRAWING IS INDICATIVE ONLY. IT IS NOT TO BE USED FOR CONSTRUCTION PURPOSES IN ANY WAY. THE DRAWING CAN ONLY BE USED AS A GUIDE FOR SELECTION AND PLACEMENT OF OBEX CORTEX FR BUILDING PROTECTION MEMBRANES AND INTERFACE SEALING MEMBRANES.

- Drawing Specific Notes:
1. Windows and Structure sealed using OBEX CORTEX "Through-Wall" sealing system.
 2. ISM options:
 - 2.1. Option A
 - 2.2. Option B
 - 2.3. Option C
 3. Minimum bond / lap dimensions should be strictly adhered to. Noting that precise building, workmanship and installation is required to ensure minimum lap dimensions are adequately sealed. In all situations the maximum lap should be used as a design and installation priority. Minimum dimensions to be used as an absolute last resort / option.

Drawing Title:
 Aluminium Window Rainscreen / SFS Structure Indicative Jamb Detail

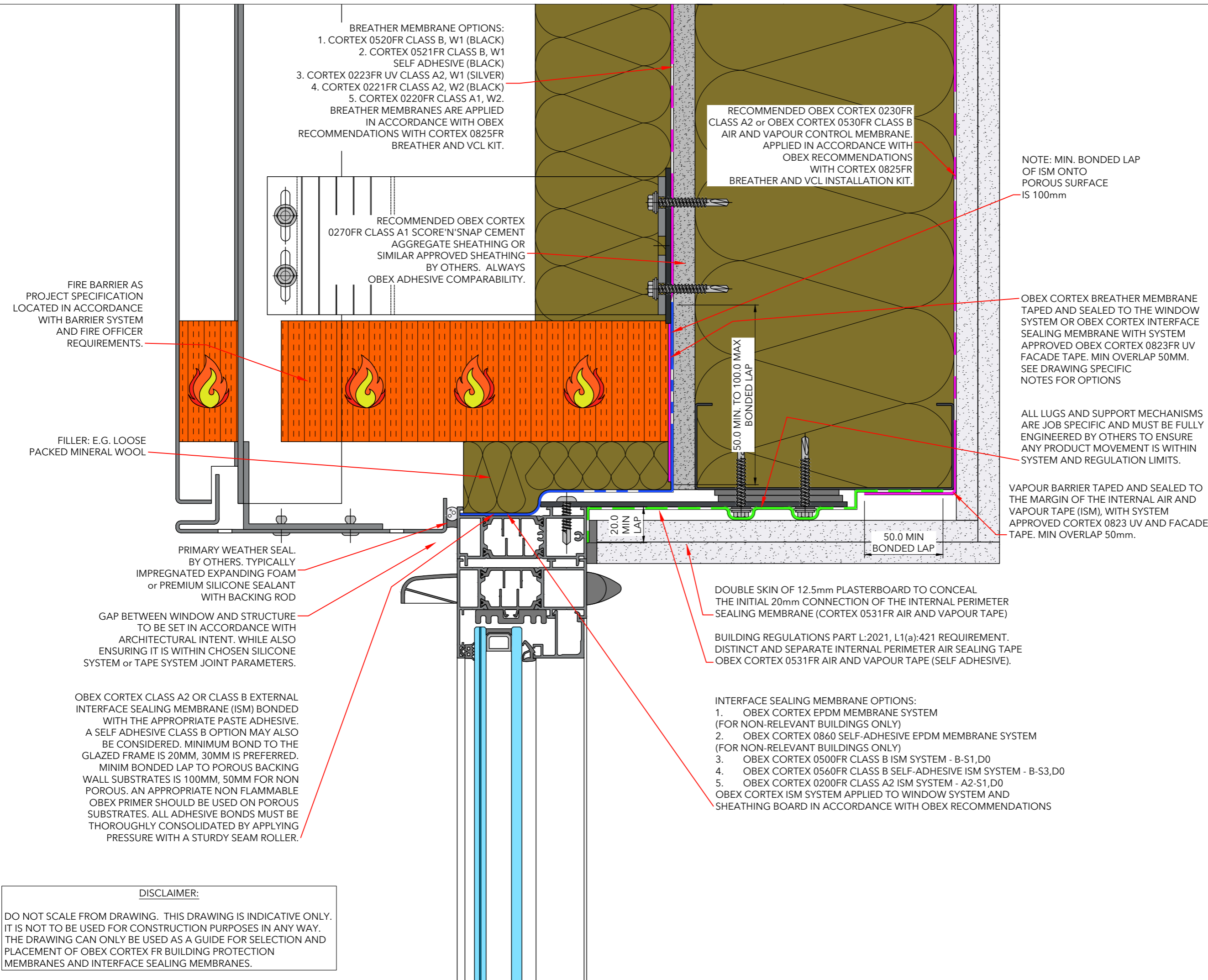
Revision: 01 Scale: 1 : 2 @ A3

Drawing Number: PROJ-OBEX-XX-DR-110

Drawn By: TTL Date Drawn: 13.03.2025



Drawn by TimTech Ltd under the guidance and instruction of OBEX Protection Ltd.



- Drawing Specific Notes:
1. Windows and Structure sealed using OBEX CORTEX "Through-Wall" sealing system.
 2. ISM options:
 - 2.1. Option A
 - 2.2. Option B
 - 2.3. Option C
 3. Minimum bond / lap dimensions should be strictly adhered to. Noting that precise building, workmanship and installation is required to ensure minimum lap dimensions are adequately sealed. In all situations the maximum lap should be used as a design and installation priority. Minimum dimensions to be used as an absolute last resort / option.

Drawing Title:
 Aluminium Window
 Rainscreen / SFS Structure
 Indicative Head Detail

Revision: 01	Scale: 1 : 2 @ A3
Drawing Number: PROJ-OBEX-XX-DR-111	
Drawn By: TTL	Date Drawn: 13.03.2025



Drawn by TimTech Ltd under the guidance and instruction of OBEX Protection Ltd.

DISCLAIMER:
 DO NOT SCALE FROM DRAWING. THIS DRAWING IS INDICATIVE ONLY. IT IS NOT TO BE USED FOR CONSTRUCTION PURPOSES IN ANY WAY. THE DRAWING CAN ONLY BE USED AS A GUIDE FOR SELECTION AND PLACEMENT OF OBEX CORTEX FR BUILDING PROTECTION MEMBRANES AND INTERFACE SEALING MEMBRANES.

DISCLAIMER:

DO NOT SCALE FROM DRAWING. THIS DRAWING IS INDICATIVE ONLY. IT IS NOT TO BE USED FOR CONSTRUCTION PURPOSES IN ANY WAY. THE DRAWING CAN ONLY BE USED AS A GUIDE FOR SELECTION AND PLACEMENT OF OBEX CORTEX FR BUILDING PROTECTION MEMBRANES AND INTERFACE SEALING MEMBRANES.

- Drawing Specific Notes:
- Windows and Structure sealed using OBEX CORTEX "Through-Wall" sealing system.
 - ISM options:
 - Option A
 - Option B
 - Option C
 - Minimum bond / lap dimensions should be strictly adhered to. Noting that precise building, workmanship and installation is required to ensure minimum lap dimensions are adequately sealed. In all situations the maximum lap should be used as a design and installation priority. Minimum dimensions to be used as an absolute last resort / option.

- INTERFACE SEALING MEMBRANE OPTIONS:**
- OBEX CORTEX EPDM MEMBRANE SYSTEM (FOR NON-RELEVANT BUILDINGS ONLY)
 - OBEX CORTEX 0860 SELF-ADHESIVE EPDM MEMBRANE SYSTEM (FOR NON-RELEVANT BUILDINGS ONLY)
 - OBEX CORTEX 0500FR CLASS B ISM SYSTEM - B-S1,D0
 - OBEX CORTEX 0560FR CLASS B SELF-ADHESIVE ISM SYSTEM - B-S3,D0
 - OBEX CORTEX 0200FR CLASS A2 ISM SYSTEM - A2-S1,D0
- OBEX CORTEX ISM SYSTEM APPLIED TO WINDOW SYSTEM AND SHEATHING BOARD IN ACCORDANCE WITH OBEX RECOMMENDATIONS

FILLER: E.G. LOOSE PACKED MINERAL WOOL

GAP BETWEEN WINDOW AND STRUCTURE TO BE SET IN ACCORDANCE WITH ARCHITECTURAL INTENT. WHILE ALSO ENSURING IT IS WITHIN CHOSEN SILICONE SYSTEM or TAPE SYSTEM JOINT PARAMETERS.

FIRE BARRIER AS PROJECT SPECIFICATION LOCATED IN ACCORDANCE WITH BARRIER SYSTEM AND FIRE OFFICER REQUIREMENTS.

ALL LUGS AND SUPPORT MECHANISMS ARE JOB SPECIFIC AND MUST BE FULLY ENGINEERED BY OTHERS TO ENSURE ANY PRODUCT MOVEMENT IS WITHIN SYSTEM AND REGULATION LIMITS.

RECOMMENDED OBEX CORTEX 0270FR CLASS A1 SCORE'N'SNAP CEMENT AGGREGATE SHEATHING OR SIMILAR APPROVED SHEATHING BY OTHERS. ALWAYS OBEX ADHESIVE COMPARABILITY.

RECOMMENDED OBEX CORTEX 0230FR CLASS A2 or OBEX CORTEX 0530FR CLASS B AIR AND VAPOUR CONTROL MEMBRANE. APPLIED IN ACCORDANCE WITH OBEX RECOMMENDATIONS WITH CORTEX 0825FR BREATHER AND VCL INSTALLATION KIT.

- BREATHER MEMBRANE OPTIONS:**
- CORTEX 0520FR CLASS B, W1 (BLACK)
 - CORTEX 0521FR CLASS B, W1 SELF ADHESIVE (BLACK)
 - CORTEX 0223FR UV CLASS A2, W1 (SILVER)
 - CORTEX 0221FR CLASS A2, W2 (BLACK)
 - CORTEX 0220FR CLASS A1, W2.
- BREATHER MEMBRANES ARE APPLIED IN ACCORDANCE WITH OBEX RECOMMENDATIONS WITH CORTEX 0825FR BREATHER AND VCL KIT.

BUILDING REGULATIONS PART L:2021, L1(a):421 REQUIREMENT. DISTINCT AND SEPARATE INTERNAL PERIMETER AIR SEALING TAPE OBEX CORTEX 0531FR AIR AND VAPOUR TAPE (SELF ADHESIVE).

DOUBLE SKIN OF 12.5mm PLASTERBOARD TO CONCEAL THE INITIAL 20mm CONNECTION OF THE INTERNAL PERIMETER SEALING MEMBRANE (CORTEX 0531FR AIR AND VAPOUR TAPE)

50.0 MIN. TO 100.0 MAX BONDED LAP

50.0 MIN BONDED LAP

20.0 LAP MIN.

OBEX CORTEX BREATHER MEMBRANE TAPED AND SEALED TO THE WINDOW SYSTEM OR OBEX CORTEX INTERFACE SEALING MEMBRANE WITH SYSTEM APPROVED OBEX CORTEX 0823FR UV FACADE TAPE. MIN OVERLAP 50MM. SEE DRAWING SPECIFIC NOTES FOR OPTIONS

NOTE: MIN. BONDED LAP OF ISM ONTO POROUS SURFACE IS 100mm

Drawing Title: Aluminium Window Rainscreen / SFS Structure Indicative Base Detail

Revision: 01 Scale: 1 : 2 @ A3

Drawing Number: PROJ-OBEX-XX-DR-112

Drawn By: TTL Date Drawn: 13.03.2025



Drawn by TimTech Ltd under the guidance and instruction of OBEX Protection Ltd.