



# Obex Drawing Register

## Standard Drawings

Generic composite - SFS, Brick

# Drawing Register

## Standard Drawings

### Generic Composite – SFS, Brick

Detail Type	Window System	Comments	Drawing number	Link
French door threshold (conc balcony)	Generic composite opens out	SFS, Brick, Door set on typical 150mm balcony upstand dwarf wall in front	PROJ-OBEX-XX-203	<a href="#">&gt;</a>
External door threshold (accessible ground)	Generic single, opens out	SFS, Brick, Door set on typical 150mm upstand at foundation level	PROJ-OBEX-XX-213	<a href="#">&gt;</a>
Sliding door threshold (conc balcony)	Generic composite	SFS, Brick, Door set on typical 150mm balcony upstand dwarf wall in front	PROJ-OBEX-XX-206	<a href="#">&gt;</a>
External door threshold (accessible ground)	Generic composite, opens in	SFS, Brick, Door set on typical 150mm upstand at foundation level	PROJ-OBEX-XX-204	<a href="#">&gt;</a>
Sliding door jamb (double over)	Generic composite	SFS, Brick	PROJ-OBEX-XX-209	<a href="#">&gt;</a>
Sliding door jamb	Generic composite	SFS, Brick	PROJ-OBEX-XX-205	<a href="#">&gt;</a>
Sliding door head	Generic composite	SFS, Brick	PROJ-OBEX-XX-207	<a href="#">&gt;</a>
Sliding door head (double over)	Generic composite	SFS, Brick	PROJ-OBEX-XX-208	<a href="#">&gt;</a>

ISM OPTIONS FOR LOW LEVEL DOOR AND FULL HEIGHT WINDOW THRESHOLDS AND SILLS IMMEDIATELY ABOVE AREAS PRONE TO STANDING WATER OR PROLONGED WETTING WITHOUT SUFFICIENT DRYING PERIODS SUCH AS INSET OR CANTILEVERED BALCONIES, WALKWAYS, PODIUMS, AND AT GROUND LEVEL.

THRESHOLD ISM MUST BE THIRD-PARTY CERTIFIED AS IMPERVIOUS AND SUITABLE FOR HIGH RISK AREAS.

1a: RELEVANT BUILDINGS: CLASS B

THRESHOLD:  
OBEX CORTEX 0500FR BONDED WITH CORTEX 0771FR PASTE ADHESIVE. LEADING EDGE BOND TO BE PRE-BONDED TO UNDERSIDE OF FRAME AT LEAST 24HOURS BEFORE MAIN DOOR INSTALLATION.

1b: HEAD AND JAMBS:  
OBEX CORTEX 0500FR BONDED WITH CORTEX 0771FR PASTE ADHESIVE OR SIMILAR CLASS B SELF-ADHESIVE VARIANT APPLIED WITH DOOR/WINDOW INSITU. IN THE NORMAL MANNER.

2a: RELEVANT BUILDINGS: CLASS A2

THRESHOLD:  
OBEX CORTEX 0500FR BONDED WITH CORTEX 0771FR PASTE ADHESIVE. LEADING EDGE BOND TO BE PRE-BONDED TO UNDERSIDE OF FRAME AT LEAST 24 HOURS BEFORE MAIN DOOR INSTALLATION.

2b: HEAD AND JAMBS:  
OBEX CORTEX 0200FR BONDED WITH CORTEX 0210FR PASTE ADHESIVE APPLIED WITH DOOR/WINDOW INSITU IN THE NORMAL MANNER.  
FROM JANUARY 2026 CORTEX 0200FR IS APPLIED TO ALL FOUR SIDES.

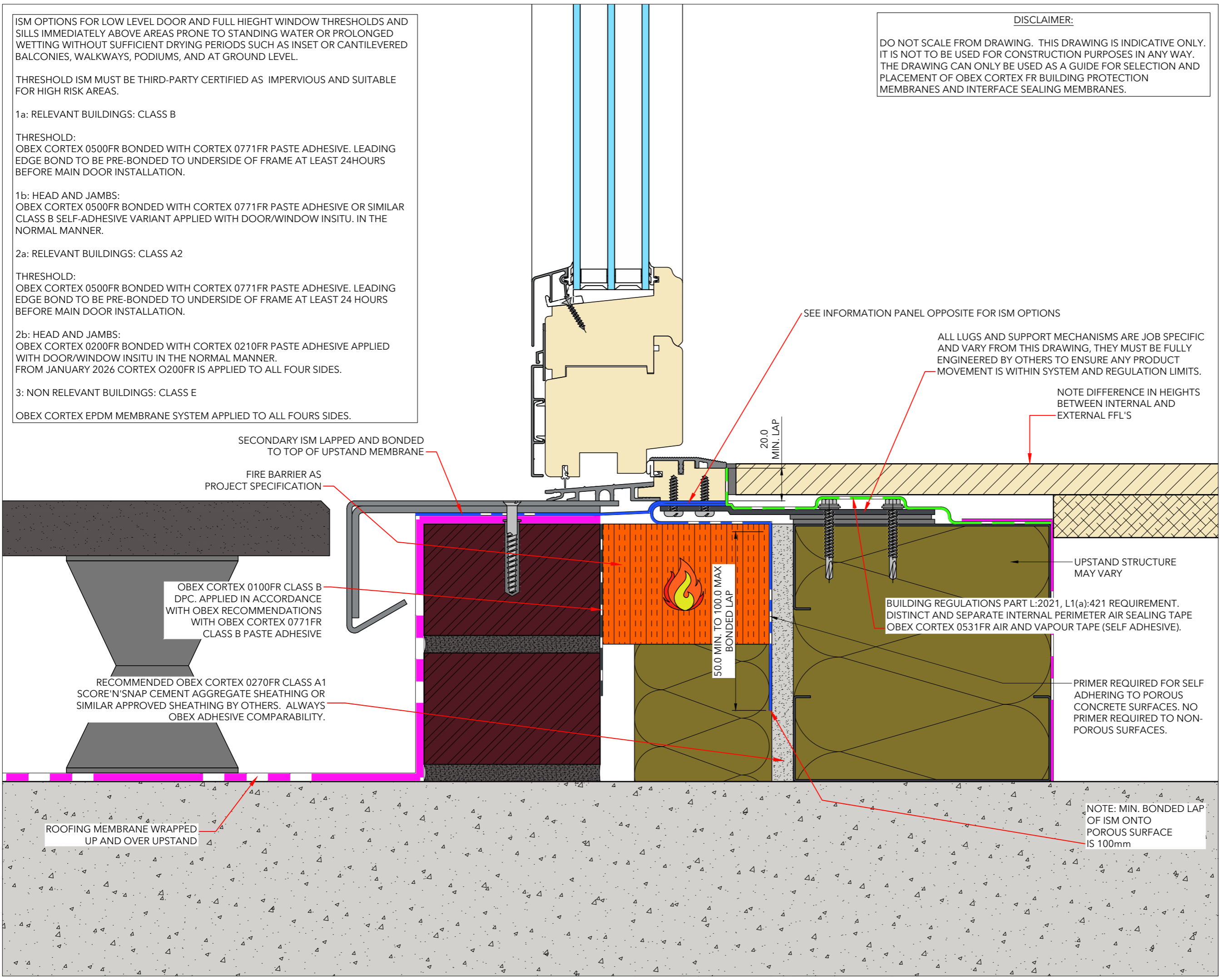
3: NON RELEVANT BUILDINGS: CLASS E

OBEX CORTEX EPDM MEMBRANE SYSTEM APPLIED TO ALL FOURS SIDES.

**DISCLAIMER:**

DO NOT SCALE FROM DRAWING. THIS DRAWING IS INDICATIVE ONLY. IT IS NOT TO BE USED FOR CONSTRUCTION PURPOSES IN ANY WAY. THE DRAWING CAN ONLY BE USED AS A GUIDE FOR SELECTION AND PLACEMENT OF OBEX CORTEX FR BUILDING PROTECTION MEMBRANES AND INTERFACE SEALING MEMBRANES.

- Drawing Specific Notes:
- Windows and Structure sealed using OBEX CORTEX "Through-Wall" sealing system.
  - ISM options:
    - Option A
    - Option B
    - Option C
  - Minimum bond / lap dimensions should be strictly adhered to. Noting that precise building, workmanship and installation is required to ensure minimum lap dimensions are adequately sealed. In all situations the maximum lap should be used as a design and installation priority. Minimum dimensions to be used as an absolute last resort / option.



Drawing Title:  
NorDan Patio Door  
Brick / SFS Structure  
Open-Out onto Balcony  
Indicative Threshold Detail

Revision: 01 Scale: 1 : 2 @ A3

Drawing Number: PROJ-OBEX-XX-DR-203

Drawn By: TTL Date Drawn: 13.03.2025



Drawn by TimTech Ltd under the guidance and instruction of OBEX Protection Ltd.

ISM OPTIONS FOR LOW LEVEL DOOR AND FULL HEIGHT WINDOW THRESHOLDS AND SILLS IMMEDIATELY ABOVE AREAS PRONE TO STANDING WATER OR PROLONGED WETTING WITHOUT SUFFICIENT DRYING PERIODS SUCH AS INSET OR CANTILEVERED BALCONIES, WALKWAYS, PODIUMS, AND AT GROUND LEVEL.

THRESHOLD ISM MUST BE THIRD-PARTY CERTIFIED AS IMPERVIOUS AND SUITABLE FOR HIGH RISK AREAS.

1a: RELEVANT BUILDINGS: CLASS B

THRESHOLD:  
OBEX CORTEX 0500FR BONDED WITH CORTEX 0771FR PASTE ADHESIVE. LEADING EDGE BOND TO BE PRE-BONDED TO UNDERSIDE OF FRAME AT LEAST 24HOURS BEFORE MAIN DOOR INSTALLATION.

1b: HEAD AND JAMBS:  
OBEX CORTEX 0500FR BONDED WITH CORTEX 0771FR PASTE ADHESIVE OR SIMILAR CLASS B SELF-ADHESIVE VARIANT APPLIED WITH DOOR/WINDOW INSITU. IN THE NORMAL MANNER.

2a: RELEVANT BUILDINGS: CLASS A2

THRESHOLD:  
OBEX CORTEX 0500FR BONDED WITH CORTEX 0771FR PASTE ADHESIVE. LEADING EDGE BOND TO BE PRE-BONDED TO UNDERSIDE OF FRAME AT LEAST 24 HOURS BEFORE MAIN DOOR INSTALLATION.

2b: HEAD AND JAMBS:  
OBEX CORTEX 0200FR BONDED WITH CORTEX 0210FR PASTE ADHESIVE APPLIED WITH DOOR/WINDOW INSITU IN THE NORMAL MANNER.  
FROM JANUARY 2026 CORTEX 0200FR IS APPLIED TO ALL FOUR SIDES.

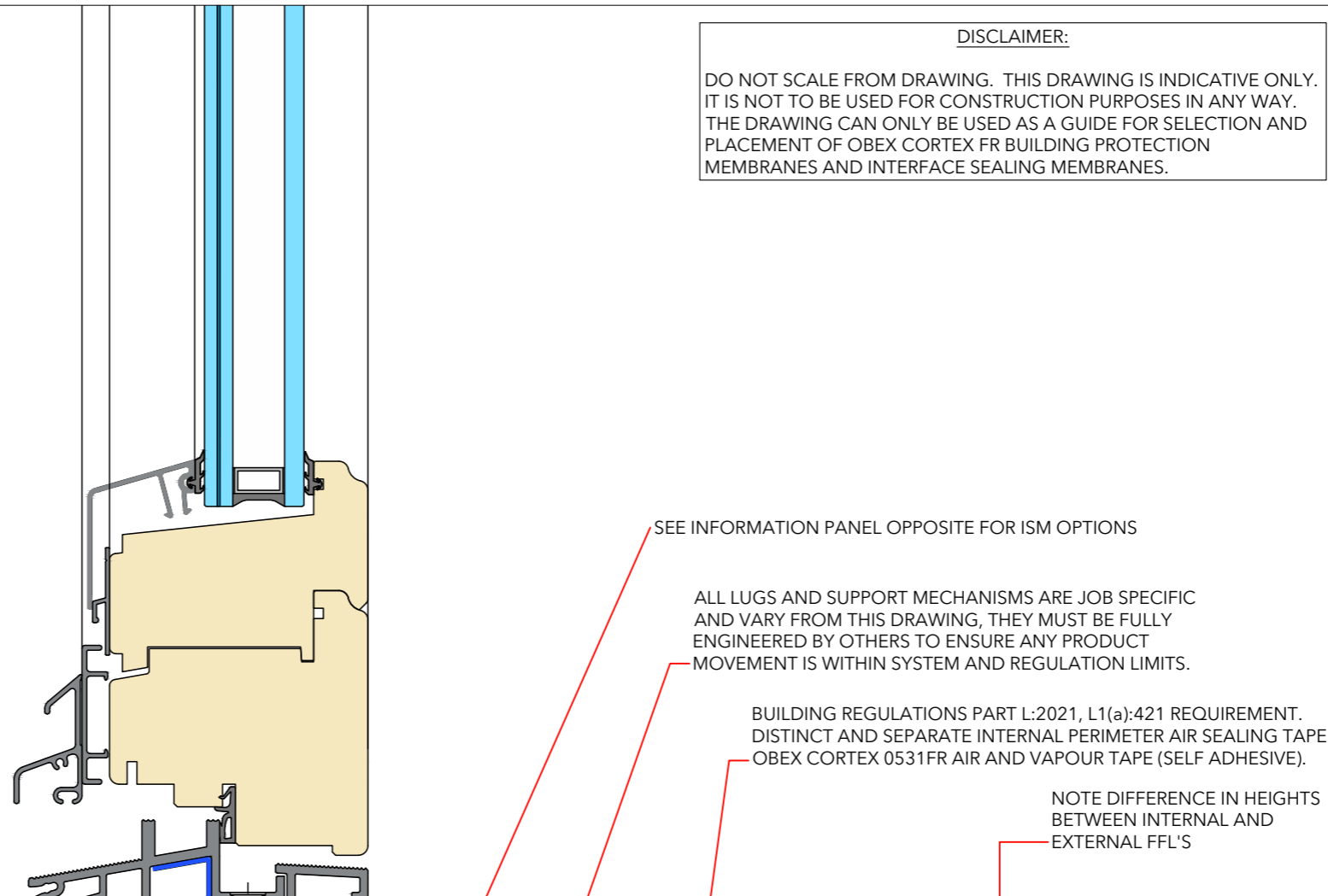
3: NON RELEVANT BUILDINGS: CLASS E

OBEX CORTEX EPDM MEMBRANE SYSTEM APPLIED TO ALL FOURS SIDES.

**DISCLAIMER:**

DO NOT SCALE FROM DRAWING. THIS DRAWING IS INDICATIVE ONLY. IT IS NOT TO BE USED FOR CONSTRUCTION PURPOSES IN ANY WAY. THE DRAWING CAN ONLY BE USED AS A GUIDE FOR SELECTION AND PLACEMENT OF OBEX CORTEX FR BUILDING PROTECTION MEMBRANES AND INTERFACE SEALING MEMBRANES.

- Drawing Specific Notes:
- Windows and Structure sealed using OBEX CORTEX "Through-Wall" sealing system.
  - ISM options:
    - Option A
    - Option B
    - Option C
  - Minimum bond / lap dimensions should be strictly adhered to. Noting that precise building, workmanship and installation is required to ensure minimum lap dimensions are adequately sealed. In all situations the maximum lap should be used as a design and installation priority. Minimum dimensions to be used as an absolute last resort / option.



SEE INFORMATION PANEL OPPOSITE FOR ISM OPTIONS

ALL LUGS AND SUPPORT MECHANISMS ARE JOB SPECIFIC AND VARY FROM THIS DRAWING, THEY MUST BE FULLY ENGINEERED BY OTHERS TO ENSURE ANY PRODUCT MOVEMENT IS WITHIN SYSTEM AND REGULATION LIMITS.

BUILDING REGULATIONS PART L:2021, L1(a):421 REQUIREMENT. DISTINCT AND SEPARATE INTERNAL PERIMETER AIR SEALING TAPE OBEX CORTEX 0531FR AIR AND VAPOUR TAPE (SELF ADHESIVE).

NOTE DIFFERENCE IN HEIGHTS BETWEEN INTERNAL AND EXTERNAL FFL'S

50.0 MIN. TO 100.0 MAX BONDED LAP

TYPE OF UPSTAND MAY VARY

PRIMER REQUIRED FOR SELF ADHERING TO POROUS CONCRETE SURFACES. NO PRIMER REQUIRED TO NON-POROUS SURFACES.

ROOFING MEMBRANE WRAPPED UP AND OVER UPSTAND

RECOMMENDED OBEX CORTEX 0270FR CLASS A1 SCORE'N'SNAP CEMENT AGGREGATE SHEATHING OR SIMILAR APPROVED SHEATHING BY OTHERS. ALWAYS OBEX ADHESIVE COMPARABILITY.

NOTE: MIN. BONDED LAP OF ISM ONTO POROUS SURFACE IS 100mm

RECOMMENDED OBEX CORTEX 0230FR CLASS A2 or OBEX CORTEX 0530FR CLASS B AIR AND VAPOUR CONTROL MEMBRANE. APPLIED IN ACCORDANCE WITH OBEX RECOMMENDATIONS WITH CORTEX 0825FR BREATHER AND VCL INSTALLATION KIT.

Drawing Title:  
NorDan Door  
Brick / SFS Structure  
Ground Floor Open-In  
Indicative Threshold Detail

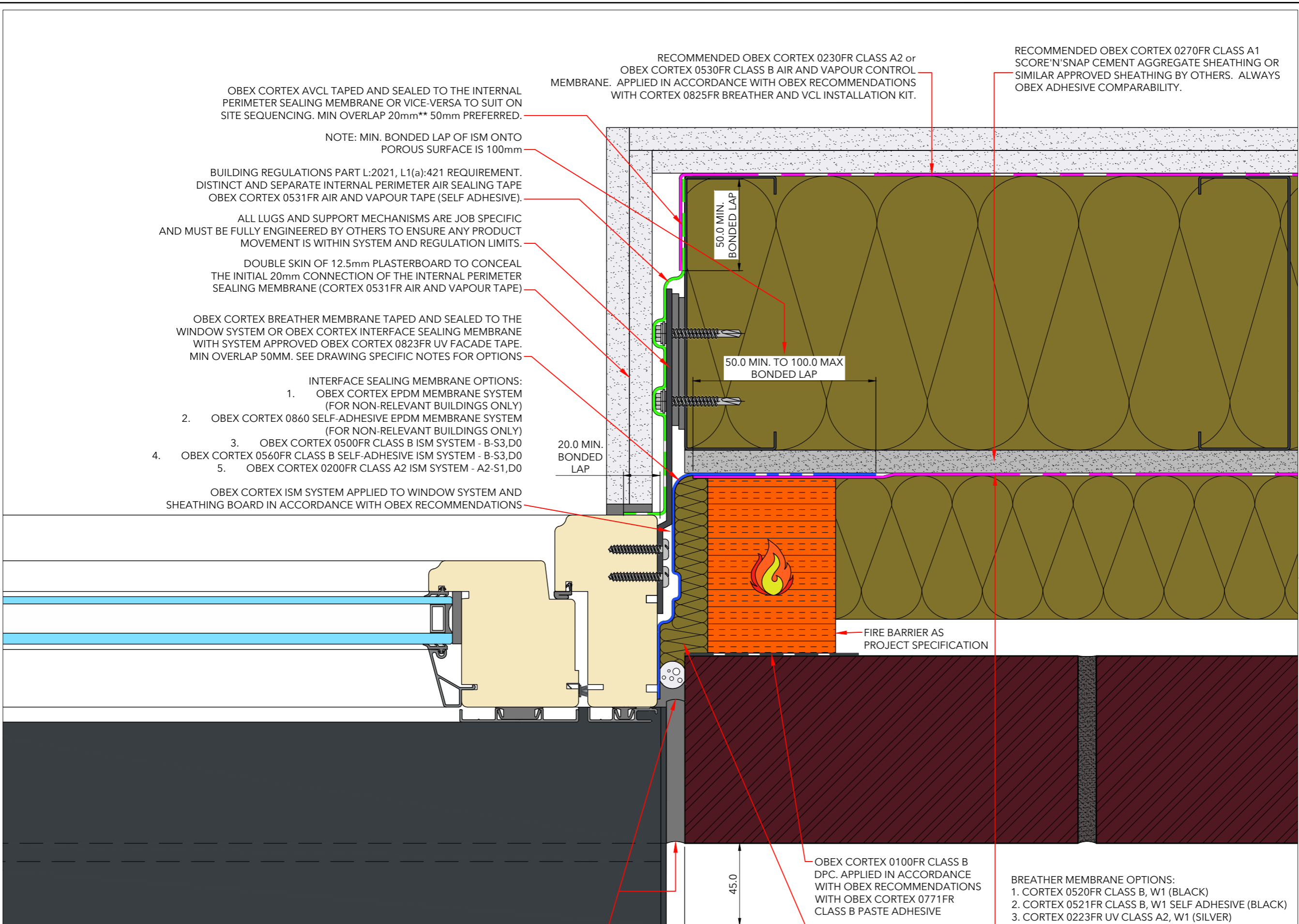
Revision: 01 Scale: 1 : 2 @ A3

Drawing Number: PROJ-OBEX-XX-DR-204

Drawn By: TTL Date Drawn: 13.03.2025



Drawn by TimTech Ltd under the guidance and instruction of OBEX Protection Ltd.



OBEX CORTEX AVCL TAPED AND SEALED TO THE INTERNAL PERIMETER SEALING MEMBRANE OR VICE-VERSA TO SUIT ON SITE SEQUENCING. MIN OVERLAP 20mm\*\* 50mm PREFERRED.

NOTE: MIN. BONDED LAP OF ISM ONTO POROUS SURFACE IS 100mm

BUILDING REGULATIONS PART L:2021, L1(a):421 REQUIREMENT. DISTINCT AND SEPARATE INTERNAL PERIMETER AIR SEALING TAPE OBEX CORTEX 0531FR AIR AND VAPOUR TAPE (SELF ADHESIVE).

ALL LUGS AND SUPPORT MECHANISMS ARE JOB SPECIFIC AND MUST BE FULLY ENGINEERED BY OTHERS TO ENSURE ANY PRODUCT MOVEMENT IS WITHIN SYSTEM AND REGULATION LIMITS.

DOUBLE SKIN OF 12.5mm PLASTERBOARD TO CONCEAL THE INITIAL 20mm CONNECTION OF THE INTERNAL PERIMETER SEALING MEMBRANE (CORTEX 0531FR AIR AND VAPOUR TAPE)

OBEX CORTEX BREATHER MEMBRANE TAPED AND SEALED TO THE WINDOW SYSTEM OR OBEX CORTEX INTERFACE SEALING MEMBRANE WITH SYSTEM APPROVED OBEX CORTEX 0823FR UV FACADE TAPE. MIN OVERLAP 50MM. SEE DRAWING SPECIFIC NOTES FOR OPTIONS

- INTERFACE SEALING MEMBRANE OPTIONS:
1. OBEX CORTEX EPDM MEMBRANE SYSTEM (FOR NON-RELEVANT BUILDINGS ONLY)
  2. OBEX CORTEX 0860 SELF-ADHESIVE EPDM MEMBRANE SYSTEM (FOR NON-RELEVANT BUILDINGS ONLY)
  3. OBEX CORTEX 0500FR CLASS B ISM SYSTEM - B-S3,D0
  4. OBEX CORTEX 0560FR CLASS B SELF-ADHESIVE ISM SYSTEM - B-S3,D0
  5. OBEX CORTEX 0200FR CLASS A2 ISM SYSTEM - A2-S1,D0

OBEX CORTEX ISM SYSTEM APPLIED TO WINDOW SYSTEM AND SHEATHING BOARD IN ACCORDANCE WITH OBEX RECOMMENDATIONS

RECOMMENDED OBEX CORTEX 0230FR CLASS A2 or OBEX CORTEX 0530FR CLASS B AIR AND VAPOUR CONTROL MEMBRANE. APPLIED IN ACCORDANCE WITH OBEX RECOMMENDATIONS WITH CORTEX 0825FR BREATHER AND VCL INSTALLATION KIT.

RECOMMENDED OBEX CORTEX 0270FR CLASS A1 SCORE'N'SNAP CEMENT AGGREGATE SHEATHING OR SIMILAR APPROVED SHEATHING BY OTHERS. ALWAYS OBEX ADHESIVE COMPARABILITY.

20.0 MIN. BONDED LAP

50.0 MIN. BONDED LAP

50.0 MIN. TO 100.0 MAX BONDED LAP

FIRE BARRIER AS PROJECT SPECIFICATION

OBEX CORTEX 0100FR CLASS B DPC. APPLIED IN ACCORDANCE WITH OBEX RECOMMENDATIONS WITH OBEX CORTEX 0771FR CLASS B PASTE ADHESIVE

FILLER: E.G. LOOSE PACKED MINERAL WOOL

GAP BETWEEN WINDOW AND STRUCTURE TO BE SET IN ACCORDANCE WITH ARCHITECTURAL INTENT. WHILE ALSO ENSURING IT IS WITHIN CHOSEN SILICONE SYSTEM or TAPE SYSTEM JOINT PARAMETERS.

- BREATHER MEMBRANE OPTIONS:
1. CORTEX 0520FR CLASS B, W1 (BLACK)
  2. CORTEX 0521FR CLASS B, W1 SELF ADHESIVE (BLACK)
  3. CORTEX 0223FR UV CLASS A2, W1 (SILVER)
  4. CORTEX 0221FR CLASS A2, W2 (BLACK)
  5. CORTEX 0220FR CLASS A1, W2.
- BREATHER MEMBRANES ARE APPLIED IN ACCORDANCE WITH OBEX RECOMMENDATIONS WITH CORTEX 0825FR BREATHER AND VCL KIT.

PRIMARY WEATHER SEAL. BY OTHERS. TYPICALLY IMPREGNATED EXPANDING FOAM or PREMIUM SILICONE SEALANT WITH BACKING ROD

**DISCLAIMER:**

DO NOT SCALE FROM DRAWING. THIS DRAWING IS INDICATIVE ONLY. IT IS NOT TO BE USED FOR CONSTRUCTION PURPOSES IN ANY WAY. THE DRAWING CAN ONLY BE USED AS A GUIDE FOR SELECTION AND PLACEMENT OF OBEX CORTEX FR BUILDING PROTECTION MEMBRANES AND INTERFACE SEALING MEMBRANES.

- Drawing Specific Notes:
1. Windows and Structure sealed using OBEX CORTEX "Through-Wall" sealing system.
  2. ISM options:
    - 2.1. Option A
    - 2.2. Option B
    - 2.3. Option C
  3. Minimum bond / lap dimensions should be strictly adhered to. Noting that precise building, workmanship and installation is required to ensure minimum lap dimensions are adequately sealed. In all situations the maximum lap should be used as a design and installation priority. Minimum dimensions to be used as an absolute last resort / option.

Drawing Title:  
 NorDan Patio Door  
 Brick / SFS Structure  
 Indicative Jamb Detail

Revision: 01	Scale: 1 : 2 @ A3
Drawing Number: PROJ-OBEX-XX-DR-205	
Drawn By: TTL	Date Drawn: 13.03.2025



Drawn by TimTech Ltd under the guidance and instruction of OBEX Protection Ltd.

ISM OPTIONS FOR LOW LEVEL DOOR AND FULL HEIGHT WINDOW THRESHOLDS AND SILLS IMMEDIATELY ABOVE AREAS PRONE TO STANDING WATER OR PROLONGED WETTING WITHOUT SUFFICIENT DRYING PERIODS SUCH AS INSET OR CANTILEVERED BALCONIES, WALKWAYS, PODIUMS, AND AT GROUND LEVEL.

THRESHOLD ISM MUST BE THIRD-PARTY CERTIFIED AS IMPERVIOUS AND SUITABLE FOR HIGH RISK AREAS.

1a: RELEVANT BUILDINGS: CLASS B

THRESHOLD:  
OBEX CORTEX 0500FR BONDED WITH CORTEX 0771FR PASTE ADHESIVE. LEADING EDGE BOND TO BE PRE-BONDED TO UNDERSIDE OF FRAME AT LEAST 24HOURS BEFORE MAIN DOOR INSTALLATION.

1b: HEAD AND JAMBS:  
OBEX CORTEX 0500FR BONDED WITH CORTEX 0771FR PASTE ADHESIVE OR SIMILAR CLASS B SELF-ADHESIVE VARIANT APPLIED WITH DOOR/WINDOW INSITU. IN THE NORMAL MANNER.

2a: RELEVANT BUILDINGS: CLASS A2

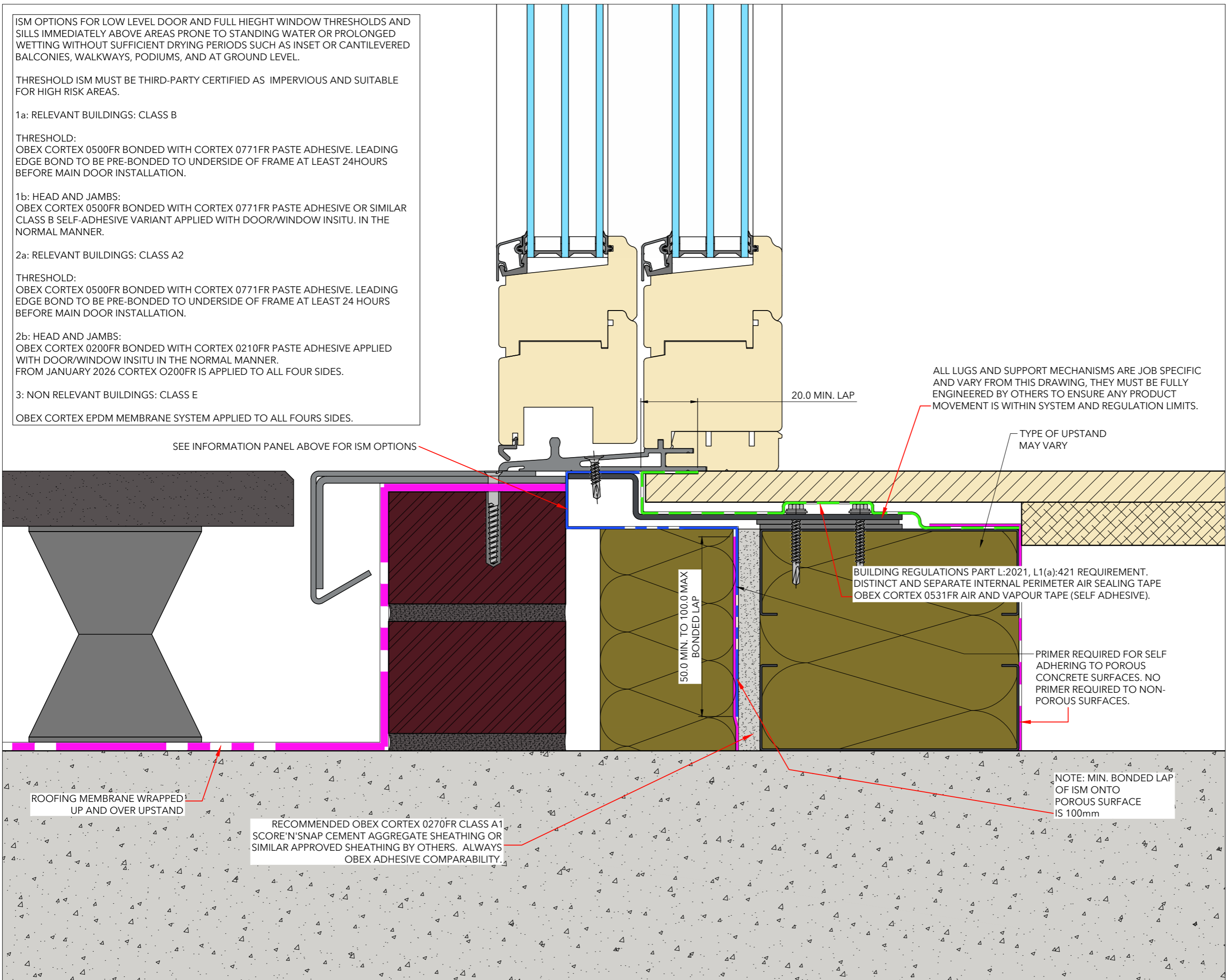
THRESHOLD:  
OBEX CORTEX 0500FR BONDED WITH CORTEX 0771FR PASTE ADHESIVE. LEADING EDGE BOND TO BE PRE-BONDED TO UNDERSIDE OF FRAME AT LEAST 24 HOURS BEFORE MAIN DOOR INSTALLATION.

2b: HEAD AND JAMBS:  
OBEX CORTEX 0200FR BONDED WITH CORTEX 0210FR PASTE ADHESIVE APPLIED WITH DOOR/WINDOW INSITU IN THE NORMAL MANNER.  
FROM JANUARY 2026 CORTEX 0200FR IS APPLIED TO ALL FOUR SIDES.

3: NON RELEVANT BUILDINGS: CLASS E

OBEX CORTEX EPDM MEMBRANE SYSTEM APPLIED TO ALL FOURS SIDES.

SEE INFORMATION PANEL ABOVE FOR ISM OPTIONS



ALL LUGS AND SUPPORT MECHANISMS ARE JOB SPECIFIC AND VARY FROM THIS DRAWING, THEY MUST BE FULLY ENGINEERED BY OTHERS TO ENSURE ANY PRODUCT MOVEMENT IS WITHIN SYSTEM AND REGULATION LIMITS.

TYPE OF UPSTAND MAY VARY

BUILDING REGULATIONS PART L:2021, L1(a):421 REQUIREMENT. DISTINCT AND SEPARATE INTERNAL PERIMETER AIR SEALING TAPE OBEX CORTEX 0531FR AIR AND VAPOUR TAPE (SELF ADHESIVE).

PRIMER REQUIRED FOR SELF ADHERING TO POROUS CONCRETE SURFACES. NO PRIMER REQUIRED TO NON-POROUS SURFACES.

NOTE: MIN. BONDED LAP OF ISM ONTO OF POROUS SURFACE IS 100mm

ROOFING MEMBRANE WRAPPED UP AND OVER UPSTAND

RECOMMENDED OBEX CORTEX 0270FR CLASS A1 SCORE'N'SNAP CEMENT AGGREGATE SHEATHING OR SIMILAR APPROVED SHEATHING BY OTHERS. ALWAYS OBEX ADHESIVE COMPARABILITY.

- Drawing Specific Notes:
- Windows and Structure sealed using OBEX CORTEX "Through-Wall" sealing system.
  - ISM options:
    - Option A
    - Option B
    - Option C
  - Minimum bond / lap dimensions should be strictly adhered to. Noting that precise building, workmanship and installation is required to ensure minimum lap dimensions are adequately sealed. In all situations the maximum lap should be used as a design and installation priority. Minimum dimensions to be used as an absolute last resort / option.

Drawing Title:  
NorDan Sliding Door  
Brick / SFS Structure  
Indicative Threshold Detail

Revision: 01 Scale: 1 : 2 @ A3

Drawing Number: PROJ-OBEX-XX-DR-206

Drawn By: TTL Date Drawn: 13.03.2025



Drawn by TimTech Ltd under the guidance and instruction of OBEX Protection Ltd.

- BREATHER MEMBRANE OPTIONS:
1. CORTEX 0520FR CLASS B, W1 (BLACK)
  2. CORTEX 0521FR CLASS B, W1 SELF ADHESIVE (BLACK)
  3. CORTEX 0223FR UV CLASS A2, W1 (SILVER)
  4. CORTEX 0221FR CLASS A2, W2 (BLACK)
  5. CORTEX 0220FR CLASS A1, W2.
- BREATHER MEMBRANES ARE APPLIED IN ACCORDANCE WITH OBEX RECOMMENDATIONS WITH CORTEX 0825FR BREATHER AND VCL KIT.

RECOMMENDED OBEX CORTEX 0230FR CLASS A2 or OBEX CORTEX 0530FR CLASS B AIR AND VAPOUR CONTROL MEMBRANE. APPLIED IN ACCORDANCE WITH OBEX RECOMMENDATIONS WITH CORTEX 0825FR BREATHER AND VCL INSTALLATION KIT.

RECOMMENDED OBEX CORTEX 0270FR CLASS A1 SCORE'N'SNAP CEMENT AGGREGATE SHEATHING OR SIMILAR APPROVED SHEATHING BY OTHERS. ALWAYS OBEX ADHESIVE COMPARABILITY.

OBEX CORTEX 0100FR CLASS B DPC. APPLIED IN ACCORDANCE WITH OBEX RECOMMENDATIONS WITH OBEX CORTEX 0771FR CLASS B PASTE ADHESIVE

FIRE BARRIER AS PROJECT SPECIFICATION

FILLER: E.G. LOOSE PACKED MINERAL WOOL

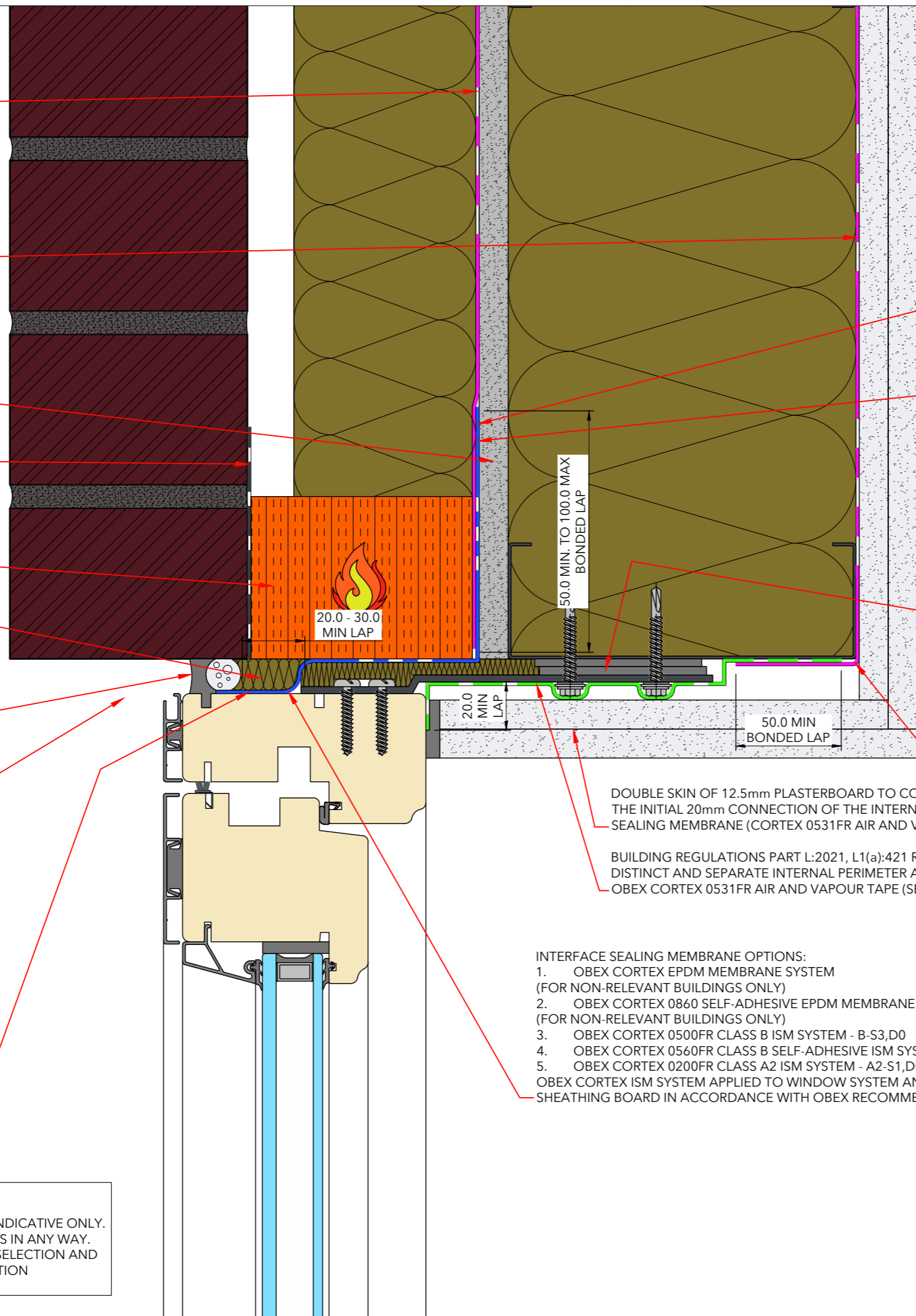
PRIMARY WEATHER SEAL BY OTHERS. TYPICALLY IMPREGNATED EXPANDING FOAM or PREMIUM SILICONE SEALANT WITH BACKING ROD

GAP BETWEEN WINDOW AND STRUCTURE TO BE SET IN ACCORDANCE WITH ARCHITECTURAL INTENT. WHILE ALSO ENSURING IT IS WITHIN CHOSEN SILICONE SYSTEM or TAPE SYSTEM JOINT PARAMETERS.

OBEX CORTEX CLASS A2 OR CLASS B EXTERNAL INTERFACE SEALING MEMBRANE (ISM) BONDED WITH THE APPROPRIATE PASTE ADHESIVE. A SELF ADHESIVE CLASS B OPTION MAY ALSO BE CONSIDERED. MINIMUM BOND TO THE GLAZED FRAME IS 20MM, 30MM IS PREFERRED. MINIMUM BONDED LAP TO POROUS BACKING WALL SUBSTRATES IS 100MM, 50MM FOR NON POROUS. AN APPROPRIATE NON FLAMMABLE OBEX PRIMER SHOULD BE USED ON POROUS SUBSTRATES. ALL ADHESIVE BONDS MUST BE THOROUGHLY CONSOLIDATED BY APPLYING PRESSURE WITH A STURDY SEAM ROLLER.

**DISCLAIMER:**

DO NOT SCALE FROM DRAWING. THIS DRAWING IS INDICATIVE ONLY. IT IS NOT TO BE USED FOR CONSTRUCTION PURPOSES IN ANY WAY. THE DRAWING CAN ONLY BE USED AS A GUIDE FOR SELECTION AND PLACEMENT OF OBEX CORTEX FR BUILDING PROTECTION MEMBRANES AND INTERFACE SEALING MEMBRANES.



NOTE: MIN. BONDED LAP OF ISM ONTO POROUS SURFACE IS 100mm

OBEX CORTEX BREATHER MEMBRANE TAPED AND SEALED TO THE WINDOW SYSTEM OR OBEX CORTEX INTERFACE SEALING MEMBRANE WITH SYSTEM APPROVED OBEX CORTEX 0823FR UV FACADE TAPE. MIN OVERLAP 50MM. SEE DRAWING SPECIFIC NOTES FOR OPTIONS

ALL LUGS AND SUPPORT MECHANISMS ARE JOB SPECIFIC AND MUST BE FULLY ENGINEERED BY OTHERS TO ENSURE ANY PRODUCT MOVEMENT IS WITHIN SYSTEM AND REGULATION LIMITS.

VAPOUR BARRIER TAPED AND SEALED TO THE MARGIN OF THE INTERNAL AIR AND VAPOUR TAPE (ISM), WITH SYSTEM APPROVED CORTEX 0823 UV AND FACADE TAPE. MIN OVERLAP 50mm.

DOUBLE SKIN OF 12.5mm PLASTERBOARD TO CONCEAL THE INITIAL 20mm CONNECTION OF THE INTERNAL PERIMETER SEALING MEMBRANE (CORTEX 0531FR AIR AND VAPOUR TAPE)

BUILDING REGULATIONS PART L:2021, L1(a):421 REQUIREMENT. DISTINCT AND SEPARATE INTERNAL PERIMETER AIR SEALING TAPE - OBEX CORTEX 0531FR AIR AND VAPOUR TAPE (SELF ADHESIVE).

- INTERFACE SEALING MEMBRANE OPTIONS:
1. OBEX CORTEX EPDM MEMBRANE SYSTEM (FOR NON-RELEVANT BUILDINGS ONLY)
  2. OBEX CORTEX 0860 SELF-ADHESIVE EPDM MEMBRANE SYSTEM (FOR NON-RELEVANT BUILDINGS ONLY)
  3. OBEX CORTEX 0500FR CLASS B ISM SYSTEM - B-S3,D0
  4. OBEX CORTEX 0560FR CLASS B SELF-ADHESIVE ISM SYSTEM - B-S3,D0
  5. OBEX CORTEX 0200FR CLASS A2 ISM SYSTEM - A2-S1,D0
- OBEX CORTEX ISM SYSTEM APPLIED TO WINDOW SYSTEM AND SHEATHING BOARD IN ACCORDANCE WITH OBEX RECOMMENDATIONS

- Drawing Specific Notes:
1. Windows and Structure sealed using OBEX CORTEX "Through-Wall" sealing system.
  2. ISM options:
    - 2.1. Option A
    - 2.2. Option B
    - 2.3. Option C
  3. Minimum bond / lap dimensions should be strictly adhered to. Noting that precise building, workmanship and installation is required to ensure minimum lap dimensions are adequately sealed. In all situations the maximum lap should be used as a design and installation priority. Minimum dimensions to be used as an absolute last resort / option.

Drawing Title:  
NorDan Patio Door  
Brick / SFS Structure  
Indicative Head Detail

Revision: 01	Scale: 1 : 2 @ A3
Drawing Number: PROJ-OBEX-XX-DR-207	
Drawn By: TTL	Date Drawn: 13.03.2025



Drawn by TimTech Ltd under the guidance and instruction of OBEX Protection Ltd.

- BREATHER MEMBRANE OPTIONS:**
1. CORTEX 0520FR CLASS B, W1 (BLACK)
  2. CORTEX 0521FR CLASS B, W1 SELF ADHESIVE (BLACK)
  3. CORTEX 0223FR UV CLASS A2, W1 (SILVER)
  4. CORTEX 0221FR CLASS A2, W2 (BLACK)
  5. CORTEX 0220FR CLASS A1, W2.
- BREATHER MEMBRANES ARE APPLIED IN ACCORDANCE WITH OBEX RECOMMENDATIONS WITH CORTEX 0825FR BREATHER AND VCL KIT.

RECOMMENDED OBEX CORTEX 0230FR CLASS A2 or OBEX CORTEX 0530FR CLASS B AIR AND VAPOUR CONTROL MEMBRANE. APPLIED IN ACCORDANCE WITH OBEX RECOMMENDATIONS WITH CORTEX 0825FR BREATHER AND VCL INSTALLATION KIT.

RECOMMENDED OBEX CORTEX 0270FR CLASS A1 SCORE'N'SNAP CEMENT AGGREGATE SHEATHING OR SIMILAR APPROVED SHEATHING BY OTHERS. ALWAYS OBEX ADHESIVE COMPARABILITY.

OBEX CORTEX 0100FR CLASS B DPC. APPLIED IN ACCORDANCE WITH OBEX RECOMMENDATIONS WITH OBEX CORTEX 0771FR CLASS B PASTE ADHESIVE

FIRE BARRIER AS PROJECT SPECIFICATION

FILLER: E.G. LOOSE PACKED MINERAL WOOL

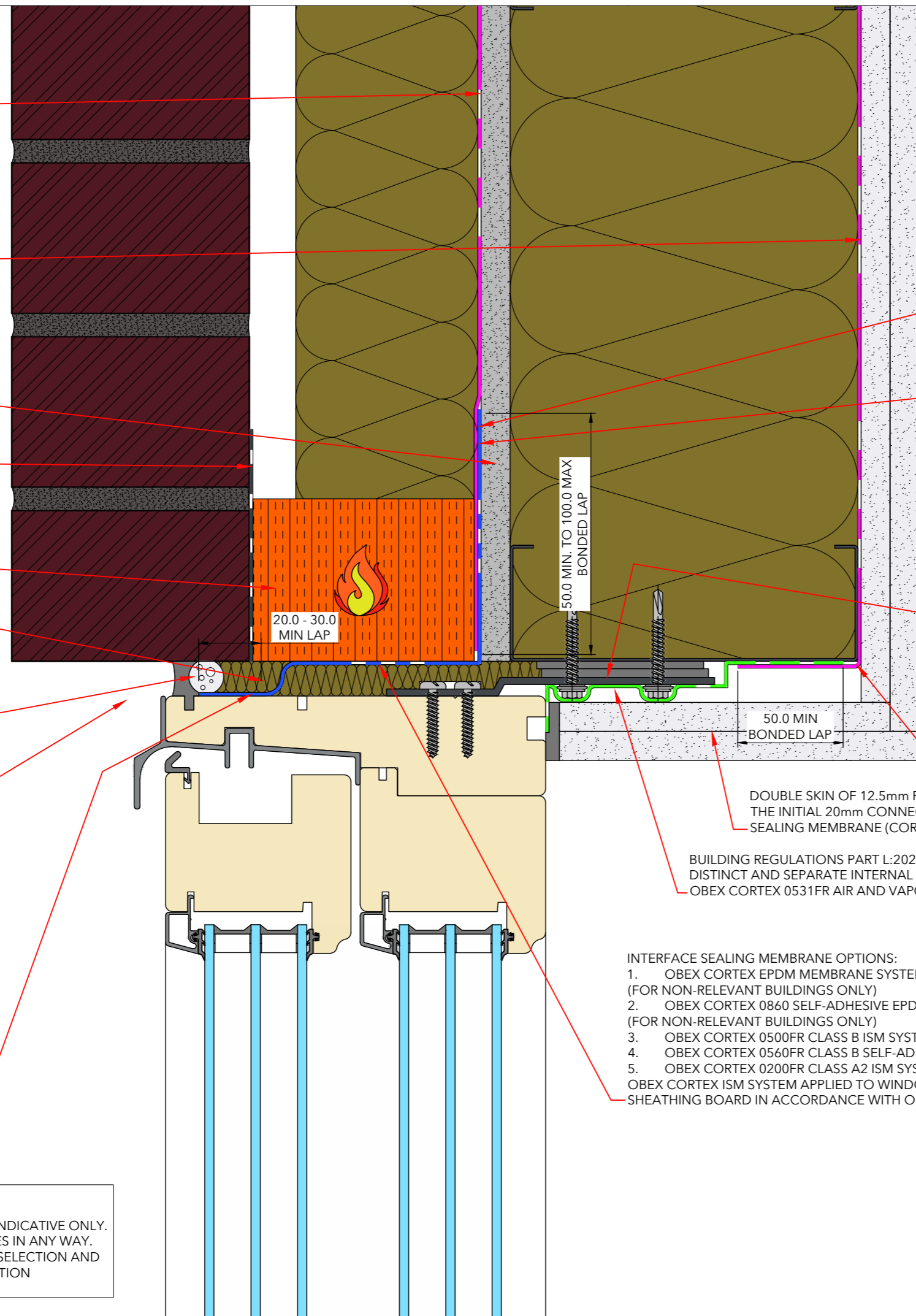
PRIMARY WEATHER SEAL BY OTHERS. TYPICALLY IMPREGNATED EXPANDING FOAM or PREMIUM SILICONE SEALANT WITH BACKING ROD

GAP BETWEEN WINDOW AND STRUCTURE TO BE SET IN ACCORDANCE WITH ARCHITECTURAL INTENT. WHILE ALSO ENSURING IT IS WITHIN CHOSEN SILICONE SYSTEM or TAPE SYSTEM JOINT PARAMETERS.

OBEX CORTEX CLASS A2 OR CLASS B EXTERNAL INTERFACE SEALING MEMBRANE (ISM) BONDED WITH THE APPROPRIATE PASTE ADHESIVE. A SELF ADHESIVE CLASS B OPTION MAY ALSO BE CONSIDERED. MINIMUM BOND TO THE GLAZED FRAME IS 20MM, 30MM IS PREFERRED. MINIMUM BONDED LAP TO POROUS BACKING WALL SUBSTRATES IS 100MM, 50MM FOR NON POROUS. AN APPROPRIATE NON FLAMMABLE OBEX PRIMER SHOULD BE USED ON POROUS SUBSTRATES. ALL ADHESIVE BONDS MUST BE THOROUGHLY CONSOLIDATED BY APPLYING PRESSURE WITH A STURDY SEAM ROLLER.

**DISCLAIMER:**

DO NOT SCALE FROM DRAWING. THIS DRAWING IS INDICATIVE ONLY. IT IS NOT TO BE USED FOR CONSTRUCTION PURPOSES IN ANY WAY. THE DRAWING CAN ONLY BE USED AS A GUIDE FOR SELECTION AND PLACEMENT OF OBEX CORTEX FR BUILDING PROTECTION MEMBRANES AND INTERFACE SEALING MEMBRANES.



NOTE: MIN. BONDED LAP OF ISM ONTO POROUS SURFACE IS 100mm

OBEX CORTEX BREATHER MEMBRANE TAPED AND SEALED TO THE WINDOW SYSTEM OR OBEX CORTEX INTERFACE SEALING MEMBRANE WITH SYSTEM APPROVED OBEX CORTEX 0823FR UV FACADE TAPE. MIN OVERLAP 50MM. SEE DRAWING SPECIFIC NOTES FOR OPTIONS

ALL LUGS AND SUPPORT MECHANISMS ARE JOB SPECIFIC AND MUST BE FULLY ENGINEERED BY OTHERS TO ENSURE ANY PRODUCT MOVEMENT IS WITHIN SYSTEM AND REGULATION LIMITS.

VAPOUR BARRIER TAPED AND SEALED TO THE MARGIN OF THE INTERNAL AIR AND VAPOUR TAPE (ISM), WITH SYSTEM APPROVED CORTEX 0823 UV AND FACADE TAPE. MIN OVERLAP 50mm.

DOUBLE SKIN OF 12.5mm PLASTERBOARD TO CONCEAL THE INITIAL 20mm CONNECTION OF THE INTERNAL PERIMETER SEALING MEMBRANE (CORTEX 0531FR AIR AND VAPOUR TAPE)

BUILDING REGULATIONS PART L:2021, L1(a):421 REQUIREMENT. DISTINCT AND SEPARATE INTERNAL PERIMETER AIR SEALING TAPE - OBEX CORTEX 0531FR AIR AND VAPOUR TAPE (SELF ADHESIVE).

**INTERFACE SEALING MEMBRANE OPTIONS:**

1. OBEX CORTEX EPDM MEMBRANE SYSTEM (FOR NON-RELEVANT BUILDINGS ONLY)
  2. OBEX CORTEX 0860 SELF-ADHESIVE EPDM MEMBRANE SYSTEM (FOR NON-RELEVANT BUILDINGS ONLY)
  3. OBEX CORTEX 0500FR CLASS B ISM SYSTEM - B-S3,D0
  4. OBEX CORTEX 0560FR CLASS B SELF-ADHESIVE ISM SYSTEM - B-S3,D0
  5. OBEX CORTEX 0200FR CLASS A2 ISM SYSTEM - A2-S1,D0
- OBEX CORTEX ISM SYSTEM APPLIED TO WINDOW SYSTEM AND SHEATHING BOARD IN ACCORDANCE WITH OBEX RECOMMENDATIONS

**Drawing Specific Notes:**

1. Windows and Structure sealed using OBEX CORTEX "Through-Wall" sealing system.
2. ISM options:
  - 2.1. Option A
  - 2.2. Option B
  - 2.3. Option C
3. Minimum bond / lap dimensions should be strictly adhered to. Noting that precise building, workmanship and installation is required to ensure minimum lap dimensions are adequately sealed. In all situations the maximum lap should be used as a design and installation priority. Minimum dimensions to be used as an absolute last resort / option.

Drawing Title:  
NorDan Sliding Door  
Brick / SFS Structure  
Indicative Head Detail

Revision: 01 Scale: 1 : 2 @ A3

Drawing Number: PROJ-OBEX-XX-DR-208

Drawn By: TTL Date Drawn: 13.03.2025



Drawn by TimTech Ltd under the guidance and instruction of OBEX Protection Ltd.

OBEX CORTEX AVCL TAPED AND SEALED TO THE INTERNAL PERIMETER SEALING MEMBRANE OR VICE-VERSA TO SUIT ON SITE SEQUENCING. MIN OVERLAP 20mm\*\* 50mm PREFERRED.

NOTE: MIN. BONDED LAP OF ISM ONTO POROUS SURFACE IS 100mm

BUILDING REGULATIONS PART L:2021, L1(a):421 REQUIREMENT. DISTINCT AND SEPARATE INTERNAL PERIMETER AIR SEALING TAPE OBEX CORTEX 0531FR AIR AND VAPOUR TAPE (SELF ADHESIVE).

ALL LUGS AND SUPPORT MECHANISMS ARE JOB SPECIFIC AND MUST BE FULLY ENGINEERED BY OTHERS TO ENSURE ANY PRODUCT MOVEMENT IS WITHIN SYSTEM AND REGULATION LIMITS.

DOUBLE SKIN OF 12.5mm PLASTERBOARD TO CONCEAL THE INITIAL 20mm CONNECTION OF THE INTERNAL PERIMETER SEALING MEMBRANE (CORTEX 0531FR AIR AND VAPOUR TAPE)

OBEX CORTEX BREATHER MEMBRANE TAPED AND SEALED TO THE WINDOW SYSTEM OR OBEX CORTEX INTERFACE SEALING MEMBRANE WITH SYSTEM APPROVED OBEX CORTEX 0823FR UV FACADE TAPE. MIN OVERLAP 50MM. SEE DRAWING SPECIFIC NOTES FOR OPTIONS

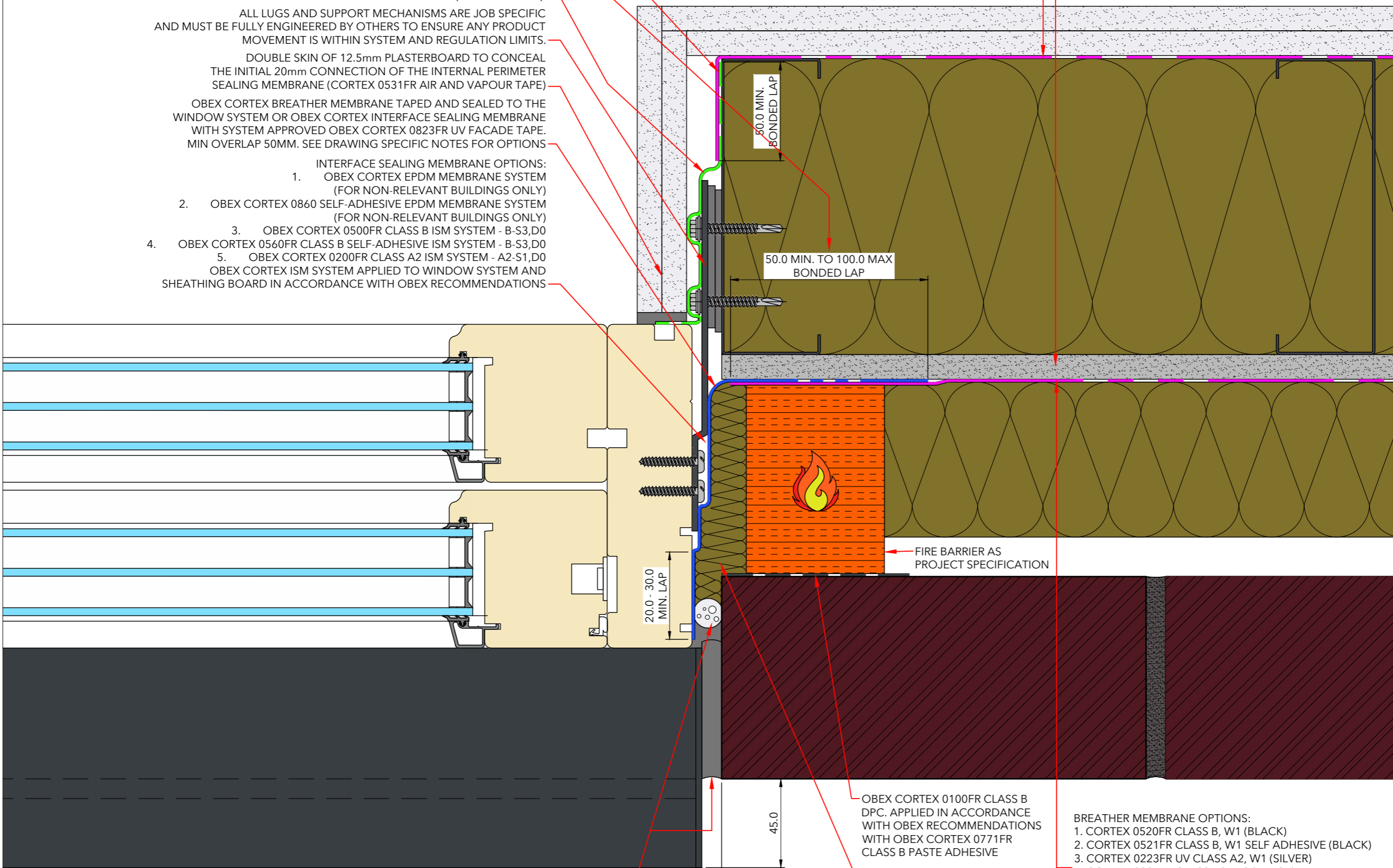
INTERFACE SEALING MEMBRANE OPTIONS:

1. OBEX CORTEX EPDM MEMBRANE SYSTEM (FOR NON-RELEVANT BUILDINGS ONLY)
  2. OBEX CORTEX 0860 SELF-ADHESIVE EPDM MEMBRANE SYSTEM (FOR NON-RELEVANT BUILDINGS ONLY)
  3. OBEX CORTEX 0500FR CLASS B ISM SYSTEM - B-S3,D0
  4. OBEX CORTEX 0560FR CLASS B SELF-ADHESIVE ISM SYSTEM - B-S3,D0
  5. OBEX CORTEX 0200FR CLASS A2 ISM SYSTEM - A2-S1,D0
- OBEX CORTEX ISM SYSTEM APPLIED TO WINDOW SYSTEM AND SHEATHING BOARD IN ACCORDANCE WITH OBEX RECOMMENDATIONS

RECOMMENDED OBEX CORTEX 0230FR CLASS A2 or OBEX CORTEX 0530FR CLASS B AIR AND VAPOUR CONTROL MEMBRANE. APPLIED IN ACCORDANCE WITH OBEX RECOMMENDATIONS WITH CORTEX 0825FR BREATHER AND VCL INSTALLATION KIT.

RECOMMENDED OBEX CORTEX 0270FR CLASS A1 SCORE'N'SNAP CEMENT AGGREGATE SHEATHING OR SIMILAR APPROVED SHEATHING BY OTHERS. ALWAYS OBEX ADHESIVE COMPARABILITY.

- Drawing Specific Notes:
1. Windows and Structure sealed using OBEX CORTEX "Through-Wall" sealing system.
  2. ISM options:
    - 2.1. Option A
    - 2.2. Option B
    - 2.3. Option C
  3. Minimum bond / lap dimensions should be strictly adhered to. Noting that precise building, workmanship and installation is required to ensure minimum lap dimensions are adequately sealed. In all situations the maximum lap should be used as a design and installation priority. Minimum dimensions to be used as an absolute last resort / option.



50.0 MIN. BONDED LAP

50.0 MIN. TO 100.0 MAX BONDED LAP

20.0 - 30.0 MIN. LAP

45.0

10.0±4

FIRE BARRIER AS PROJECT SPECIFICATION

OBEX CORTEX 0100FR CLASS B DPC. APPLIED IN ACCORDANCE WITH OBEX RECOMMENDATIONS WITH OBEX CORTEX 0771FR CLASS B PASTE ADHESIVE

FILLER: E.G. LOOSE PACKED MINERAL WOOL

GAP BETWEEN WINDOW AND STRUCTURE TO BE SET IN ACCORDANCE WITH ARCHITECTURAL INTENT. WHILE ALSO ENSURING IT IS WITHIN CHOSEN SILICONE SYSTEM or TAPE SYSTEM JOINT PARAMETERS.

- BREATHER MEMBRANE OPTIONS:
1. CORTEX 0520FR CLASS B, W1 (BLACK)
  2. CORTEX 0521FR CLASS B, W1 SELF ADHESIVE (BLACK)
  3. CORTEX 0223FR UV CLASS A2, W1 (SILVER)
  4. CORTEX 0221FR CLASS A2, W2 (BLACK)
  5. CORTEX 0220FR CLASS A1, W2.
- BREATHER MEMBRANES ARE APPLIED IN ACCORDANCE WITH OBEX RECOMMENDATIONS WITH CORTEX 0825FR BREATHER AND VCL KIT.

PRIMARY WEATHER SEAL. BY OTHERS. TYPICALLY IMPREGNATED EXPANDING FOAM or PREMIUM SILICONE SEALANT WITH BACKING ROD

**DISCLAIMER:**  
DO NOT SCALE FROM DRAWING. THIS DRAWING IS INDICATIVE ONLY. IT IS NOT TO BE USED FOR CONSTRUCTION PURPOSES IN ANY WAY. THE DRAWING CAN ONLY BE USED AS A GUIDE FOR SELECTION AND PLACEMENT OF OBEX CORTEX FR BUILDING PROTECTION MEMBRANES AND INTERFACE SEALING MEMBRANES.

Drawing Title:  
NorDan Sliding Door  
Brick / SFS Structure  
Indicative Jamb Detail

Revision: 01	Scale: 1 : 2 @ A3
Drawing Number: PROJ-OBEX-XX-DR-209	
Drawn By: TTL	Date Drawn: 13.03.2025



Drawn by TimTech Ltd under the guidance and instruction of OBEX Protection Ltd.

